

Partners in Play (PIP) is an independent, parent / carer led charity, established in 1996 which offers direct support and information to families of children / young people with disabilities. PIP is based in Motherwell and operates throughout North Lanarkshire.

We aim to support and signpost families to the range of opportunities available to them, to promote the development of inclusive recreational opportunities for children and young people in their local communities by, helping clubs and organisations to become confident and open to children of all abilities.

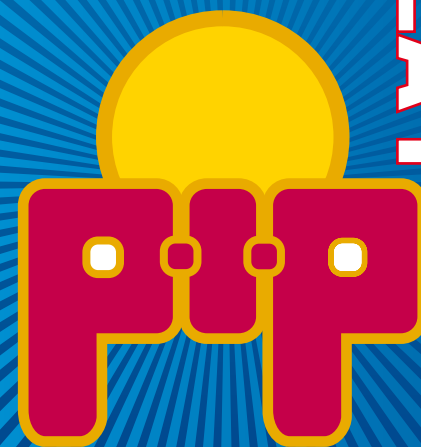
We do this by:

- Helping to build the whole family's confidence through our support workers' help and information.
- Supporting organisations to develop skills, abilities and confidence to include the child.
- Promoting equality.
- Developing relationships with local organisations so that they can confidently include children with additional support needs into local community activities.



Partners In Play (PIP)
G2, Dalziel Building, 7 Scott Street
Motherwell, ML1 1PN
t: 01698 230130 Fax: 01698 337256
www.partnersinplay.org.uk
email: info@partnersinplay.org.uk
Charity registered in Scotland No. SC029250
Company limited by guarantee No. SC207039

PARTNERS IN PLAY



Partners in Play
Improving opportunities for children
and young people with a disability

The three main services we provide are:

Initial Inclusive Support (IIS)

A service offering short term Initial Inclusion Support to clubs and organisations, where such support is required to enable a child / young person with a disability to attend the club or activity on a regular basis. Families can contact PIP directly for this support which is free of charge.

Point of Diagnosis (POD)

A new service known as Point of Diagnosis (POD): This service offers support and guidance to families at the point where their child has been diagnosed with a disability or additional support need. Providing an information resource and signposting families to sources of support and services as required, in response to the changing needs of the child and family. This service is also free of charge.

Route 13

“Route 13” is a group that provides respite for carers and social / group activities for young people aged 13-18 years. Days and times vary. Meeting bases are across North Lanarkshire. No charge except for child’s activities.

If you or anyone you know is interested in our service then please give us a call on 01698 230 130.

